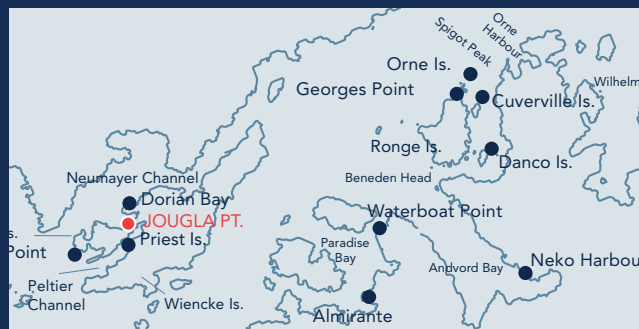


Jougla Point

64°49'S, 63°30'W - Located in Port Lockroy at the western end of Wiencke Island

Key features

- Gentoo Penguins
- Blue-eyed Shags
- Glacial scenery
- Whale bones



Description

TOPOGRAPHY

Jougla Point is a rocky peninsula indented with small coves. At the beginning of the season fast ice is likely to surround the Point. Snow cornices, glaciers and extensive, steep, and highly crevassed snowfields surround the harbour.

FAUNA

Confirmed breeders: Gentoo penguins (*Pygoscelis papua*) blue-eyed shags (*Phalacrocorax atriceps*), kelp gulls (*Larus dominicanus*), Antarctic terns (*Sterna vittata*) and skuas (*Catharacta*, spp.).

Regularly haul out: Weddell seals (*Leptonychotes weddellii*)

FLORA

Xanthoria spp., *Caloplaca* spp., *Buellia* spp., other crustose lichen species, and the green alga *Prasiola crispa* are present but not widespread.

Visitor Impact

KNOWN IMPACTS

None.

POTENTIAL IMPACTS

Disturbance of wildlife.

Landing Requirements

SHIPS*

Ships carrying 500 or fewer passengers. One ship at a time. Maximum 3 ships per day (midnight to midnight).

VISITORS

No more than 100 visitors at any time, exclusive of expedition guides and leaders. 1 guide to 20 visitors. No visitors ashore between 22:00hrs and 04:00hrs (local time), except for those engaged in organised overnight stays. This is in order to establish a resting period for the wildlife.

Visitor Area

LANDING AREA

Primary area on boulders and rocks at the northeastern end of the Point. Alternative beaches on west side of the Point or in Alice Creek on the east side of the Point (particularly suitable for small yachts).

CLOSED AREAS

Closed Area A: Gentoo penguin and blue-eyed shag nesting area at the northwestern tip of Jougla Point behind the concrete blocks.

Closed Area B: Higher rocky slope to the south of Alice Creek which includes a kelp gull colony.

GUIDED WALKING AREAS

None.

FREE ROAMING AREAS

Visitors may roam freely, but under close supervision, except in the closed areas. Given the irregular topography at this site, guides should be aware that it is more difficult to ensure the necessary supervision of visitors.

Visitor Code of Conduct

BEHAVIOUR ASHORE

Walk slowly and carefully. Maintain a precautionary distance of 5 metres from wildlife, and give animals the right-of-way. Increase this distance if any change in behaviour is observed.

Be careful near Antarctic fur seals and skuas. They may be aggressive. Do not walk on any vegetation.

CAUTIONARY NOTES

Be aware that this site can be particularly muddy, wet and slippery.

* A ship is defined as a vessel which carries more than 12 passengers.

Jougla Point

64°49'S, 63°30'W - Located in Port Lockroy at the western end of Wiencke Island



Jougla Point with Goudier Island in the background



Closed area begins at the line of concrete blocks on the NW end



Primary landing area

JOUGLA POINT

- Gentoo penguins
- Blue-eyed shags
- Closed areas
- Antarctic Site Inventory stake
- Concrete block

